

# 南京诺金电气有限公司

## Nanjing Nowking Electric Co., Ltd

焊接端子样本



产品名称: 焊接端子

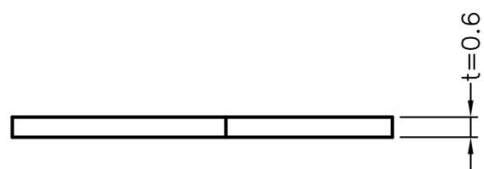
规格型号: PCH-1

◆ MATERIAL: TIN PLATED BRASS

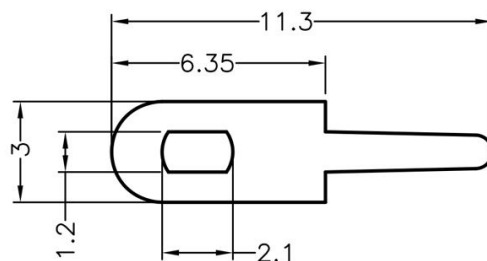
◆ UNIT: mm

用途: PC/PCB 板上之焊接电线端子, 美观、牢固。

PCH-1 结构图



HOLE IN P.C.B  $\phi 1.2 \sim 1.3$



	PART NO	PACKAGE
	PCH-1	2000

# 南京诺金电气有限公司

## Nanjing Nowking Electric Co., Ltd



产品名称: 焊接端子

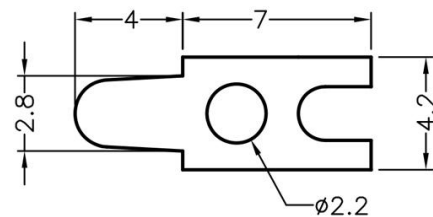
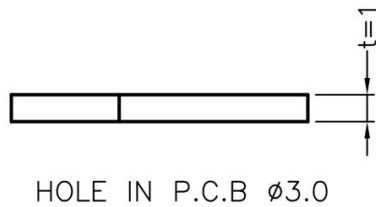
规格型号: PCH-2

◆MATERIAL: TIN PLATED BRASS

◆UNIT: mm

用途: PC/PCB 板上之焊接电线端子, 美观、牢固。

PCH-2 结构图



	PART NO	PACKAGE
	PCH-2	2000

# 南京诺金电气有限公司

## Nanjing Nowking Electric Co., Ltd



产品名称: 焊接端子

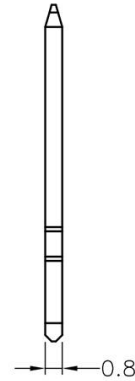
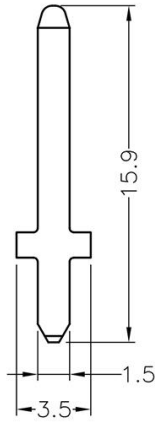
规格型号: PCH-3

◆ MATERIAL: NI PLATED BRASS

◆ UNIT: mm

用途: PC/PCB 板上之焊接电线端子, 美观、牢固。

PCH-3 结构图



	PART NO	PACKAGE
	PCH-3	1000