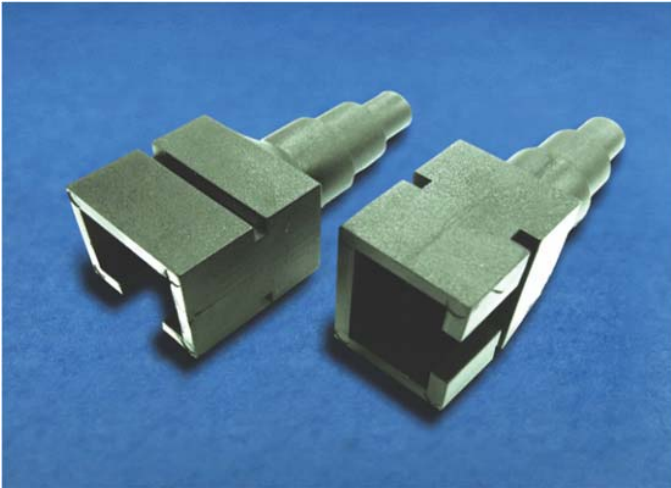


南京诺金电气有限公司

Nanjing Nowking Electric Co., Ltd

开关盖样本



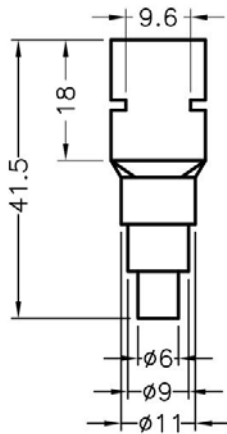
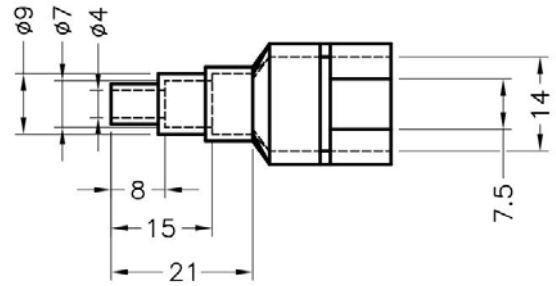
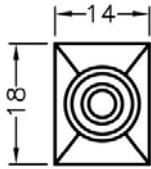
产品名称：开关盖

规格型号：KG-C01

- ◆ MATERIAL: PE
- ◆ COLOR: BLACK
- ◆ UNIT: mm

用途：开关之绝缘。

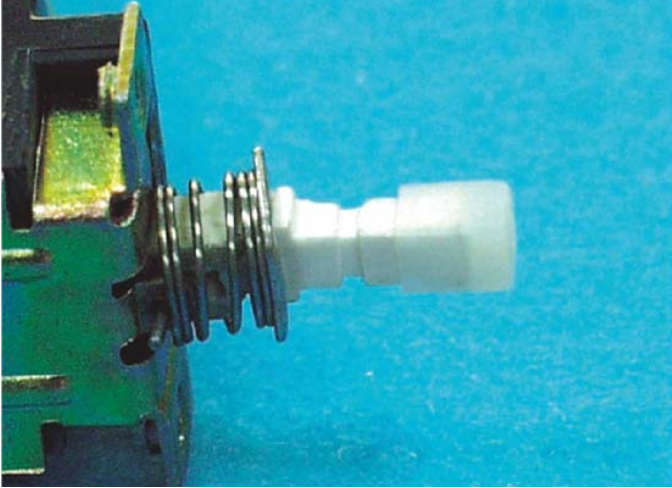
KG-C01 结构图



	PART NO	PACKAGE
	KG-C01	500

南京诺金电气有限公司

Nanjing Nowking Electric Co., Ltd



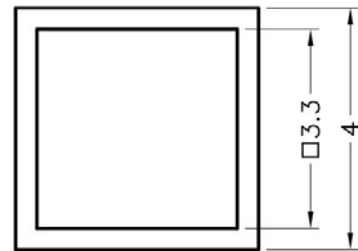
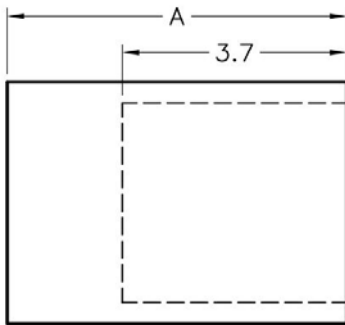
产品名称：开关盖

规格型号：KG-C02

- ◆ MATERIAL: NYLON 66(UL)
- ◆ FLAME CLASS: 94V-0, 94V-2
- ◆ COLOR: BLACK, NATURAL
- ◆ UNIT: mm

用途：用于开关之加长与保护。

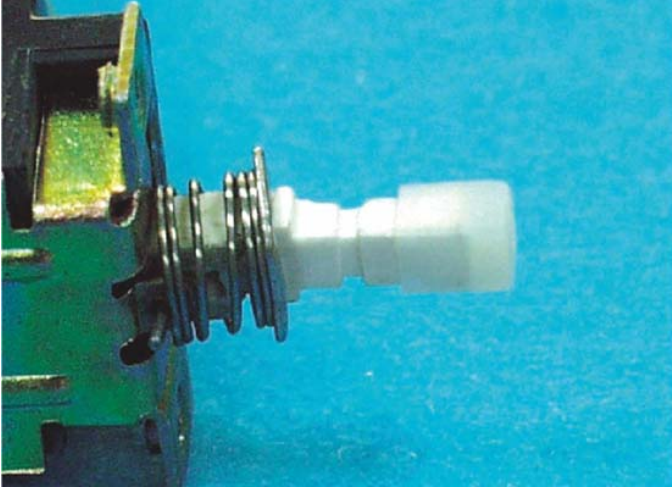
KG-C02 结构图



	PART NO	A	PACKAGE
	KG-C02	5.6	2000

南京诺金电气有限公司

Nanjing Nowking Electric Co., Ltd



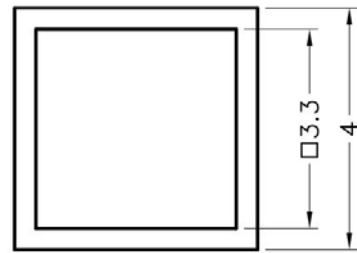
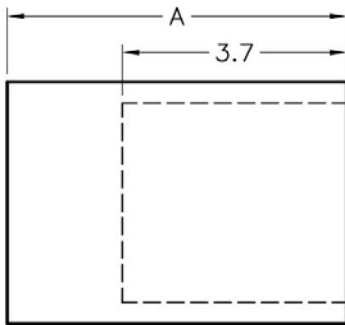
产品名称：开关盖

规格型号：KG-C03

- ◆ MATERIAL: NYLON 66(UL)
- ◆ FLAME CLASS: 94V-0, 94V-2
- ◆ COLOR: BLACK, NATURAL
- ◆ UNIT: mm

用途：用于开关之加长与保护。

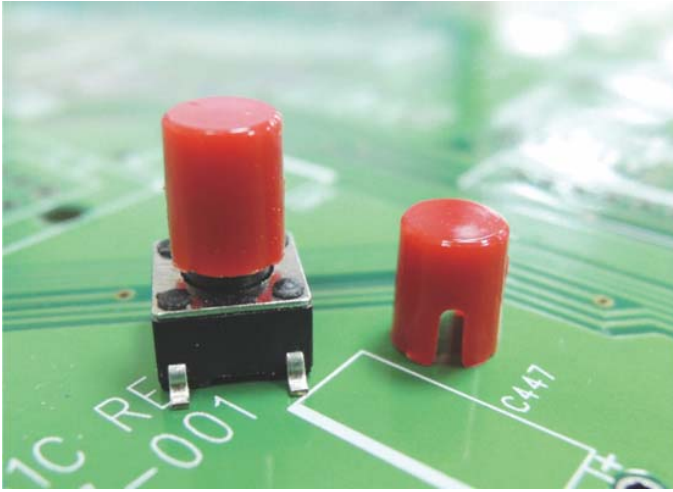
KG-C03 结构图



	PART NO	A	PACKAGE
	KG-C03	4.7	2000

南京诺金电气有限公司

Nanjing Nowking Electric Co., Ltd



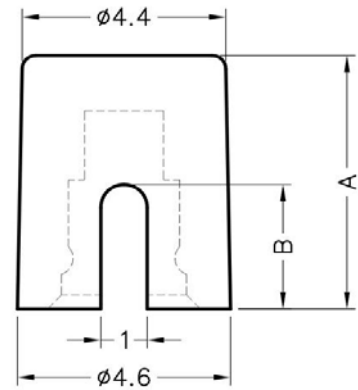
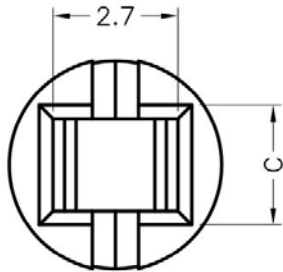
产品名称：开关盖

规格型号：KG-C04

- ◆ MATERIAL: NYLON 66(UL)
- ◆ FLAME CLASS: 94V-0, 94V-2
- ◆ COLOR: BLACK, NATURAL, GRAY, RED
- ◆ UNIT: mm

用途：用于开关之加长与保护。

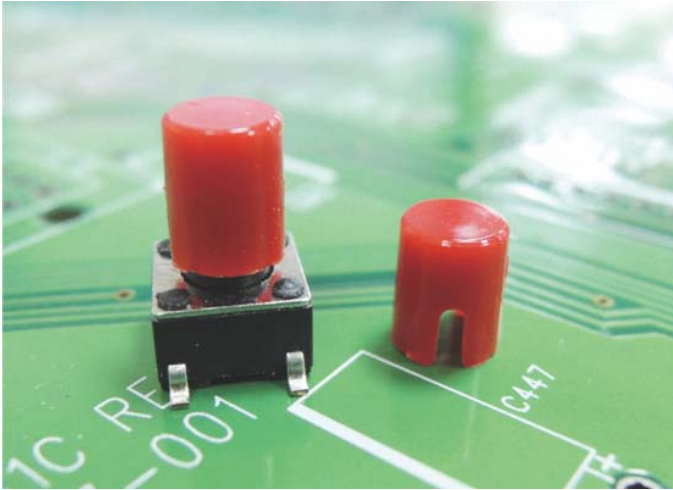
KG-C04 结构图



	PART NO	A	B	C	PACKAGE
	KG-C04	5.5	2.8	2.6	1000

南京诺金电气有限公司

Nanjing Nowking Electric Co., Ltd



产品名称：开关盖

规格型号：KG-C05

- ◆ MATERIAL:ABS(UL)
- ◆ FLAME CLASS:94HB
- ◆ COLOR: BLACK,WHITE
- ◆ UNIT: mm

用途：用于开关之加长与保护。

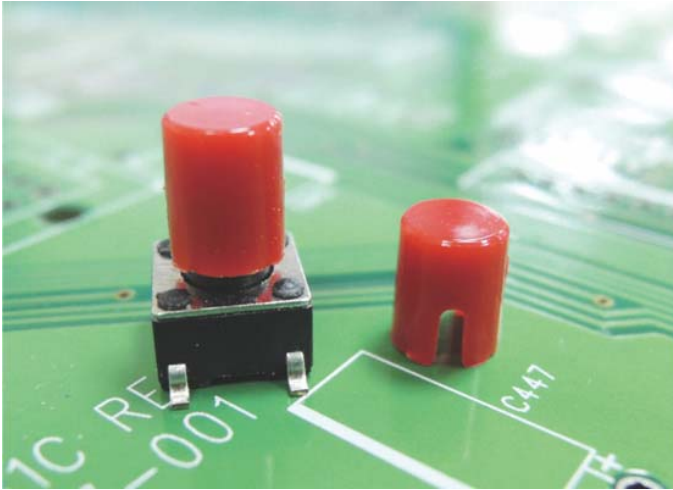
KG-C05 结构图



PART NO	A	B	C	PACKAGE
KG-C05	5.5	2.5	2.6	1000

南京诺金电气有限公司

Nanjing Nowking Electric Co., Ltd



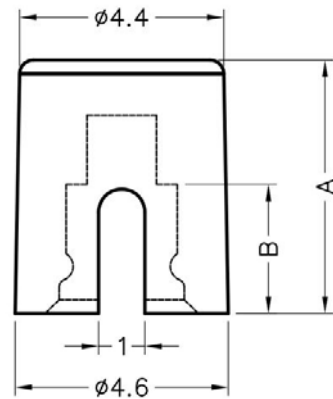
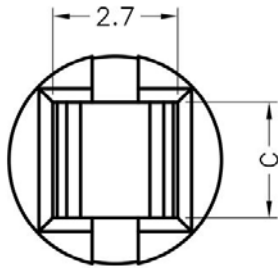
产品名称：开关盖

规格型号：KG-C06

- ◆ MATERIAL: NYLON 66(UL)
- ◆ FLAME CLASS: 94V-0, 94V-2
- ◆ COLOR: BLACK, WHITE, RED, NATURAL
- ◆ UNIT: mm

用途：用于开关之加长与保护。

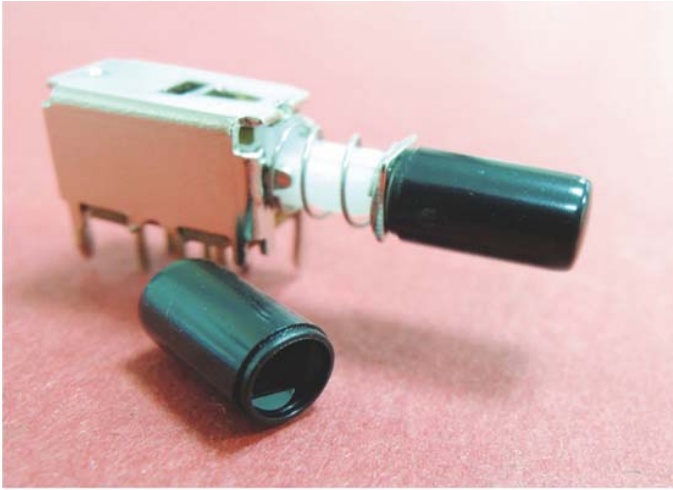
KG-C06 结构图



PART NO	A	B	C	PACKAGE
KG-C06	5.5	2.8	2.5	1000

南京诺金电气有限公司

Nanjing Nowking Electric Co., Ltd



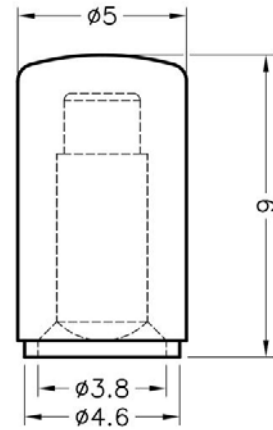
产品名称：开关盖

规格型号：KG-C07

- ◆ MATERIAL: PC+ABS(UL)
- ◆ FLAME CLASS: 94V-0, 94V-2
- ◆ COLOR: BLACK
- ◆ UNIT: mm

用途：用于 TACT 开关之帽盖。

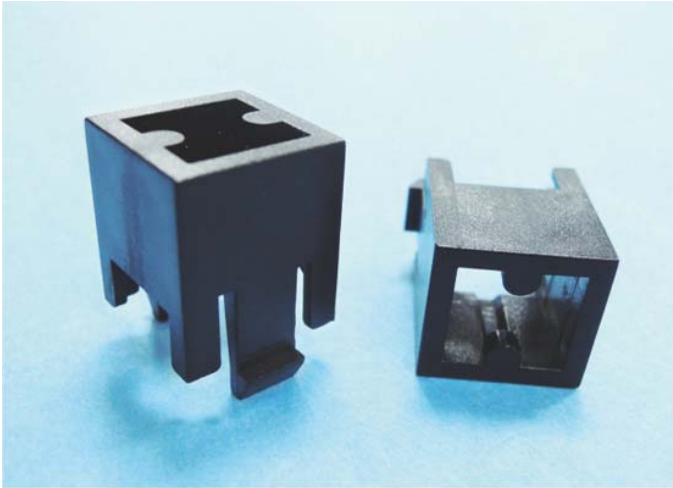
KG-C07 结构图



	PART NO	PACKAGE
	KG-C07	1000

南京诺金电气有限公司

Nanjing Nowking Electric Co., Ltd



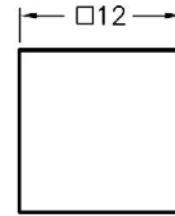
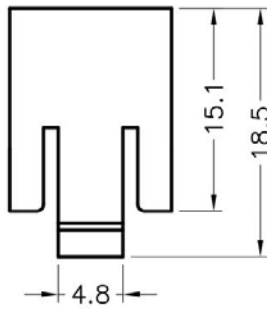
产品名称：开关盖

规格型号：KG-C08

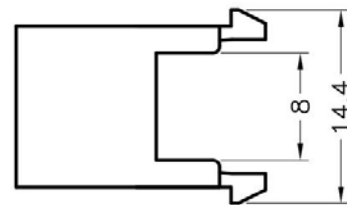
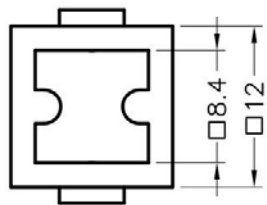
- ◆ MATERIAL: ABS(UL)
- ◆ FLAME CLASS: 94HB
- ◆ COLOR: BLACK
- ◆ UNIT: mm

用途：用于 TACT 开关固定于机板上。

KG-C08 结构图



MOUNTING HOLE



	PART NO	PACKAGE
	KG-C08	1000

南京诺金电气有限公司

Nanjing Nowking Electric Co., Ltd



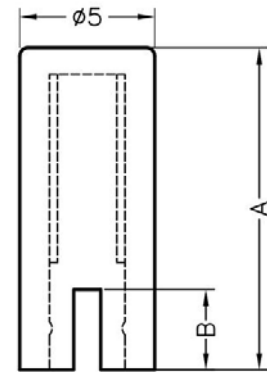
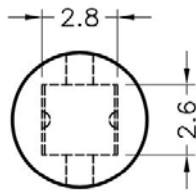
产品名称：开关盖

规格型号：KG-C09

- ◆ MATERIAL: NYLON 66(UL)
- ◆ FLAME CLASS: 94V-0, 94V-2
- ◆ COLOR: BLACK, NATURAL
- ◆ UNIT: mm

用途：用于 TACT 开关帽盖。

KG-C09 结构图



PART NO	A	B	PACKAGE
KG-C09	12.0	3.0	1000

南京诺金电气有限公司

Nanjing Nowking Electric Co., Ltd



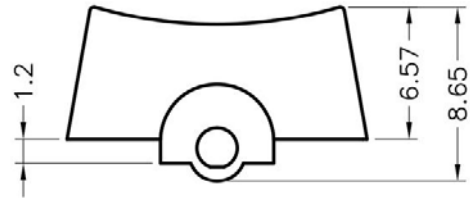
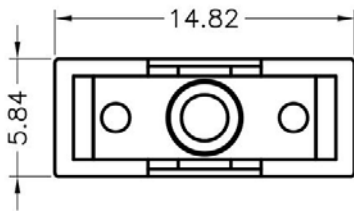
产品名称：开关盖

规格型号：KG-C10

- ◆ MATERIAL: NYLON 66(UL)
- ◆ FLAME CLASS: 94V-0, 94V-2
- ◆ COLOR: BLACK, NATURAL
- ◆ UNIT: mm

用途：用于开关之按键。

KG-C10 结构图



	PART NO	PACKAGE
	KG-C10	1000

南京诺金电气有限公司

Nanjing Nowking Electric Co., Ltd



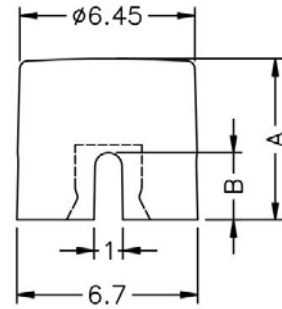
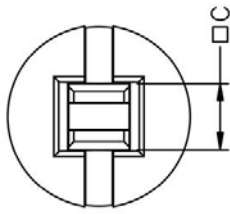
产品名称：开关盖

规格型号：KG-C11

- ◆ MATERIAL: NYLON 66(UL)
- ◆ FLAME CLASS: 94V-0, 94V-2
- ◆ COLOR: BLACK, WHITE, RED, NATURAL
- ◆ UNIT: mm

用途：用于开关之加长与保护。

KG-C11 结构图



PART NO	A	B	C	PACKAGE
KG-C11	6.0	2.5	2.45	1000

南京诺金电气有限公司

Nanjing Nowking Electric Co., Ltd



产品名称：开关盖

规格型号：KG-C12

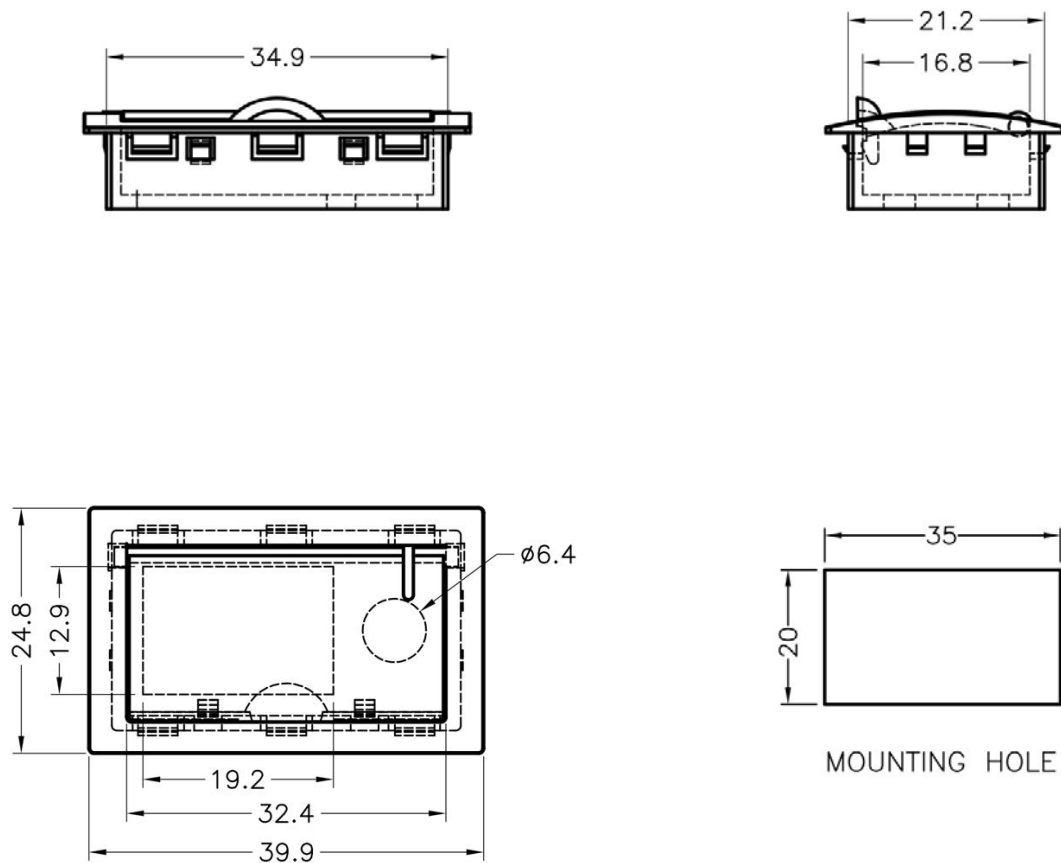
- ◆ MATERIAL 1: NYLON 66(UL)
- ◆ FLAME CLASS 2: 94V-2
- ◆ COLOR 1: BLA1K
- ◆ MATERIAL 2: PC(UL)
- ◆ FLAME CLASS 2: 94V-0
- ◆ COLOR: BLACK
- ◆ UNIT: mm

用途：用于开关保护用

MATERIAL 1 为本体

MATERIAL 2 为盖子

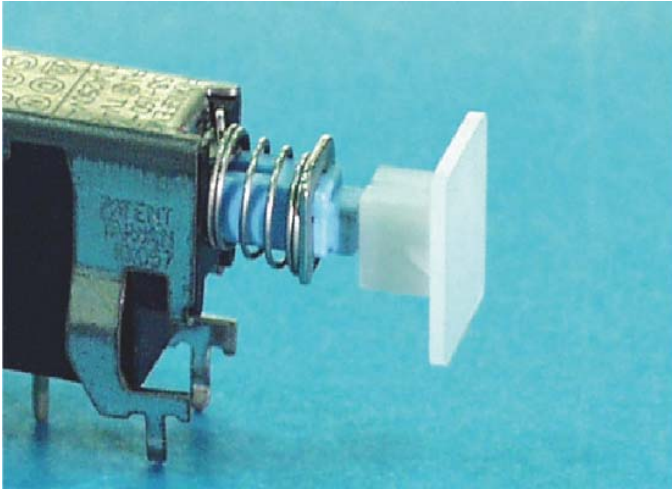
KG-C12 结构图



PART NO	PACKAGE
KG-C12	1000

南京诺金电气有限公司

Nanjing Nowking Electric Co., Ltd



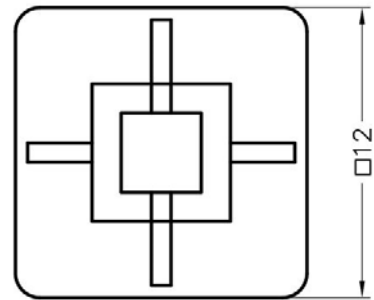
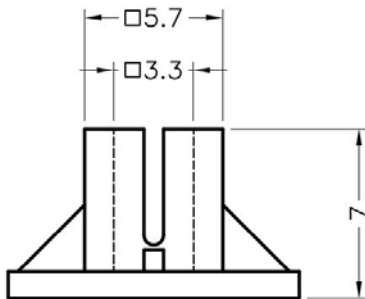
产品名称：开关盖

规格型号：KG-C13

- ◆ MATERIAL 1: NYLON 66(UL)
- ◆ FLAME CLASS : 94V-2, 94V-0
- ◆ COLOR : BLACK, NATURAL
- ◆ UNIT: mm

用途：用于开关加长与保护。

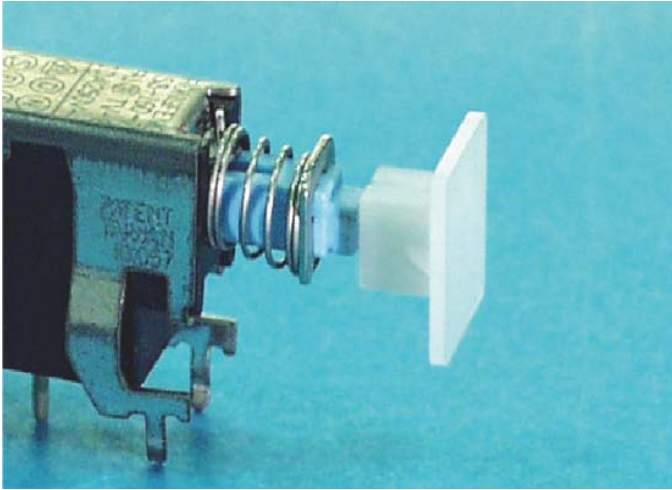
KG-C13 结构图



	PART NO	PACKAGE
	KG-C13	1000

南京诺金电气有限公司

Nanjing Nowking Electric Co., Ltd



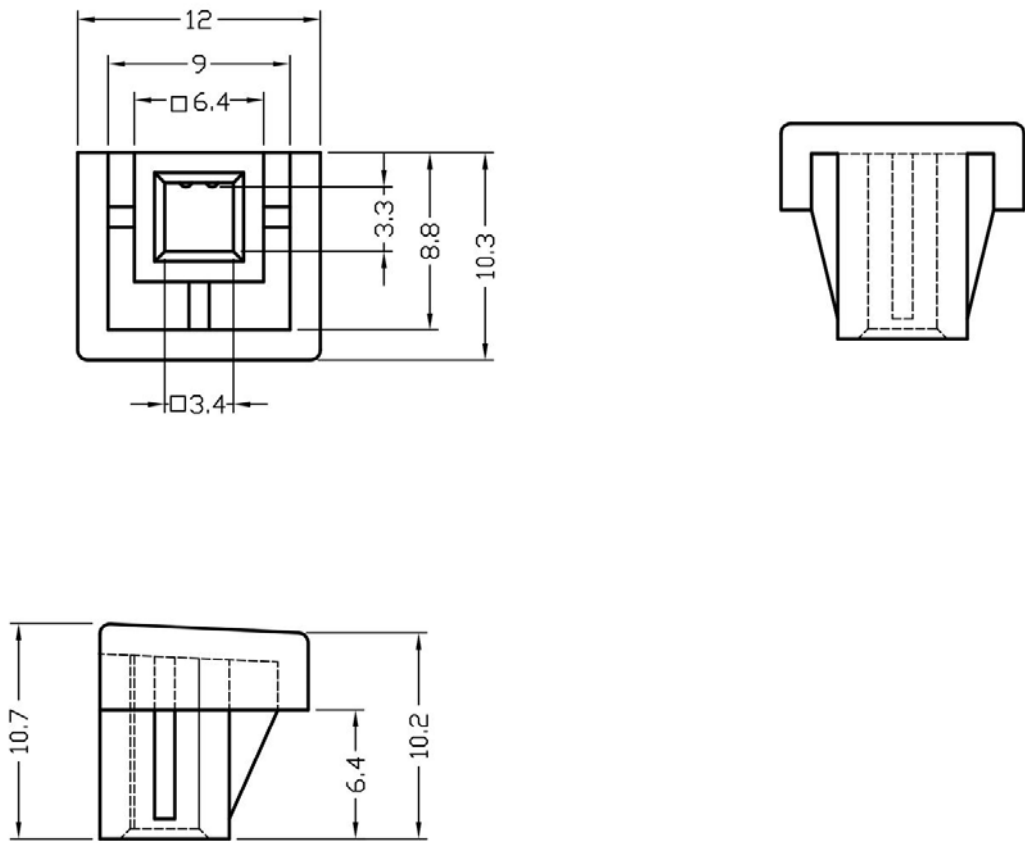
产品名称：开关盖

规格型号：KG-C14

- ◆ MATERIAL 1:PC+ABS(UL)
- ◆ FLAME CLASS :94HB
- ◆ COLOR : BLACK,GRAY
- ◆ UNIT: mm

用途：用于开关加长与保护。

KG-C14 结构图



PART NO	PACKAGE
KG-C14	1000

南京诺金电气有限公司

Nanjing Nowking Electric Co., Ltd



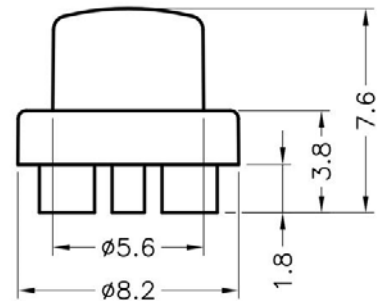
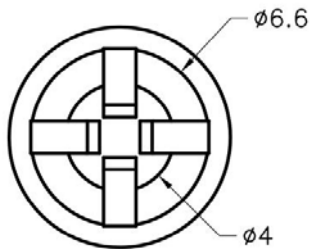
产品名称：开关盖

规格型号：KG-C15

- ◆ MATERIAL : NYLON66(UL)
- ◆ FLAME CLASS : 94V-0, 94V-2
- ◆ COLOR : BLACK, NATURAL
- ◆ UNIT: m

用途：用于开关按键。

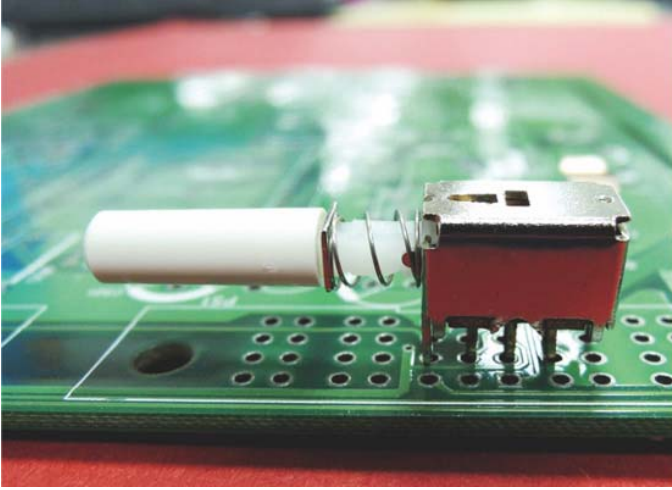
KG-C15 结构图



	PART NO	PACKAGE
	KG-C15	1000

南京诺金电气有限公司

Nanjing Nowking Electric Co., Ltd



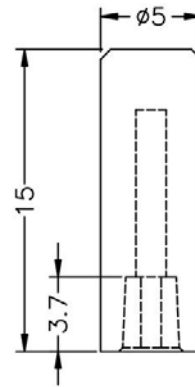
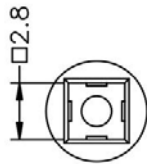
产品名称：开关盖

规格型号：KG-C16

- ◆ MATERIAL :PC+ABS(UL)
- ◆ FLAME CLASS :94V-0, 94V-2
- ◆ COLOR : WHITE
- ◆ UNIT: mm

用途：用于开关盖帽。

KG-C16 结构图



	PART NO	PACKAGE
	KG-C16	1000

南京诺金电气有限公司

Nanjing Nowking Electric Co., Ltd



产品名称：开关盖

规格型号：KG-C17

◆ MATERIAL :PC+ABS(UL)

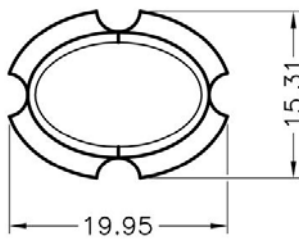
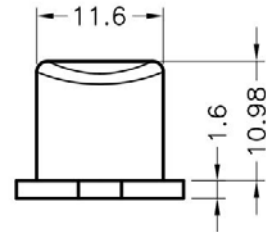
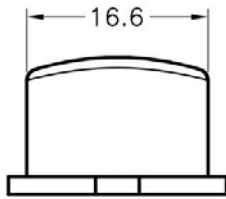
◆ FLAME CLASS :94V-0

◆ COLOR : BLACK,GRAY

◆ UNIT: mm

用途：用于开关盖帽。

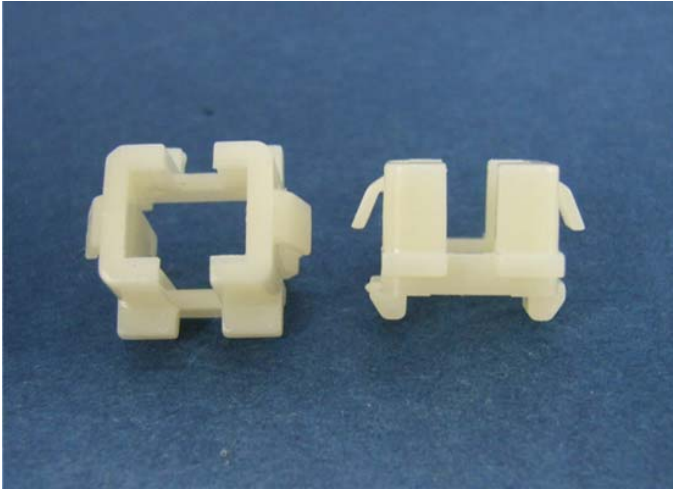
KG-C17 结构图



	PART NO	PACKAGE
	KG-C17	1000

南京诺金电气有限公司

Nanjing Nowking Electric Co., Ltd



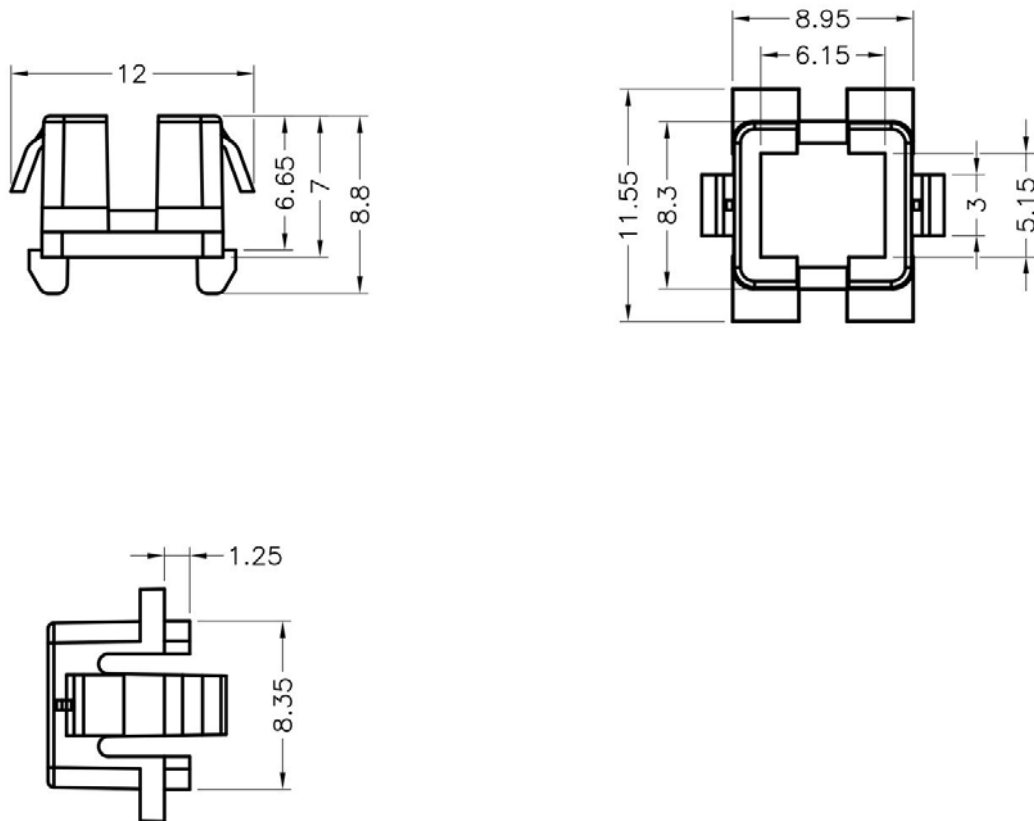
产品名称：开关盖

规格型号：KG-C18

- ◆ MATERIAL :PC+ABS(UL)
- ◆ FLAME CLASS :94V-0,94V-0
- ◆ COLOR : BLACK,NATURAL
- ◆ UNIT: mm

用途：将 TACT 开关固定于机板上。

KG-C18 结构图



PART NO	PACKAGE
KG-C18	1000

南京诺金电气有限公司

Nanjing Nowking Electric Co., Ltd



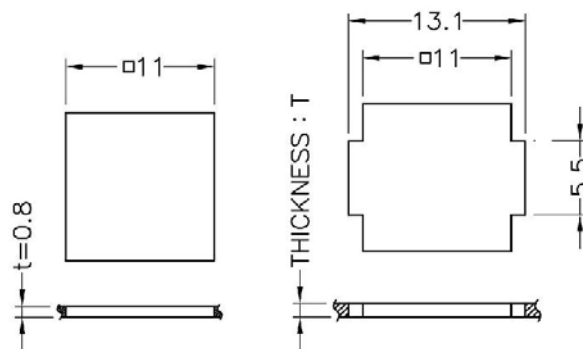
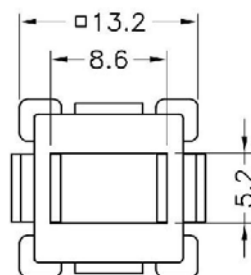
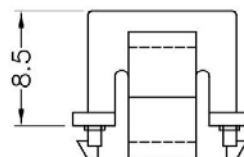
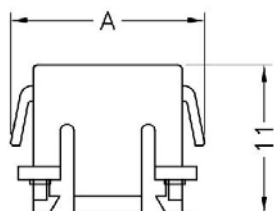
产品名称：开关盖

规格型号：KG-C19

- ◆ MATERIAL :PC+ABS(UL)
- ◆ FLAME CLASS :94V-0,94V-0
- ◆ COLOR : BLACK,NATURAL
- ◆ UNIT: mm

用途：将 TACT 开关固定于机板上。

KG-C19 结构图



MOUNTING HOLE

PART NO	A	T	PACKAGE
KG-C19	14.5	1.0	1000

(规格 / 尺寸) 代码说明：

T : 板厚

南京诺金电气有限公司

Nanjing Nowking Electric Co., Ltd



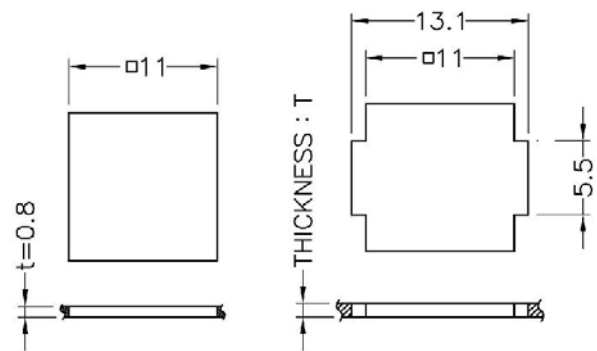
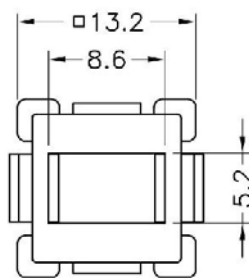
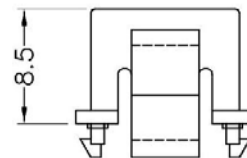
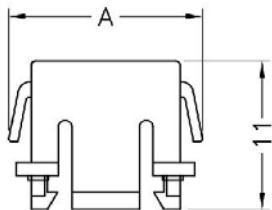
产品名称：开关盖

规格型号：KG-C20

- ◆ MATERIAL :PC+ABS(UL)
- ◆ FLAME CLASS :94V-0,94V-0
- ◆ COLOR : BLACK,NATURAL
- ◆ UNIT: mm

用途：将 TACT 开关固定于机板上。

KG-C20 结构图



MOUNTING HOLE

PART NO	A	T	PACKAGE
KG-C20	14.32	1.4	1000

(规格 / 尺寸) 代码说明：

T : 板厚

南京诺金电气有限公司

Nanjing Nowking Electric Co., Ltd

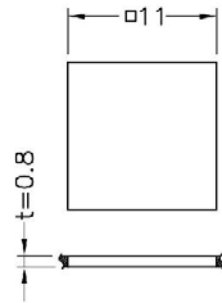
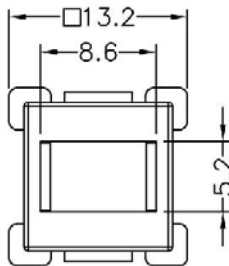
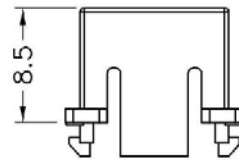
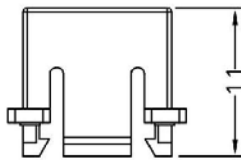


产品名称：开关盖

规格型号：KG-C21

- ◆ MATERIAL :ABS(UL)
 - ◆ FLAME CLASS :94V-0, 94HB
 - ◆ COLOR :
 - BLACK,NATURAL,COMPUTER
 - ◆ UNIT: mm
- 用途: 将 TACT 开关固定于机板上。

KG-C21 结构图

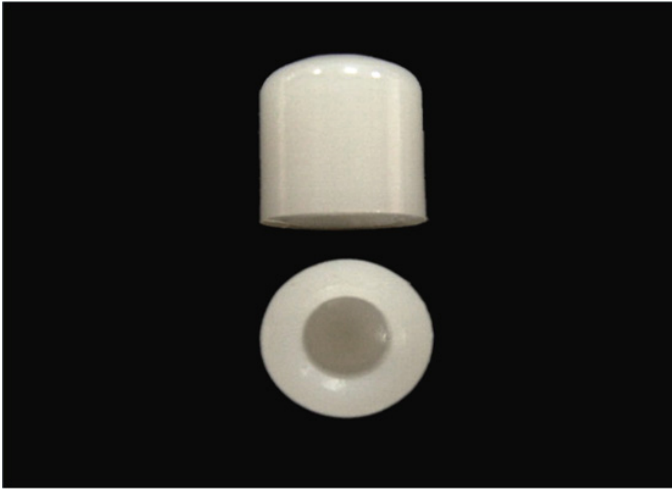


MOUNTING HOLE

	PART NO	PACKAGE
	KG-C21	1000

南京诺金电气有限公司

Nanjing Nowking Electric Co., Ltd



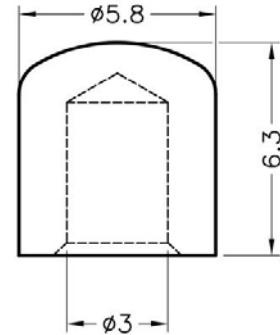
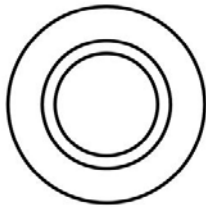
产品名称：开关盖

规格型号：KG-C22

- ◆ MATERIAL : NYLON 66(UL)
- ◆ FLAME CLASS : 94V-0, 94V-2
- ◆ COLOR : BLACK, NATURAL
- ◆ UNIT: mm

用途：将 TACT 开关盖帽

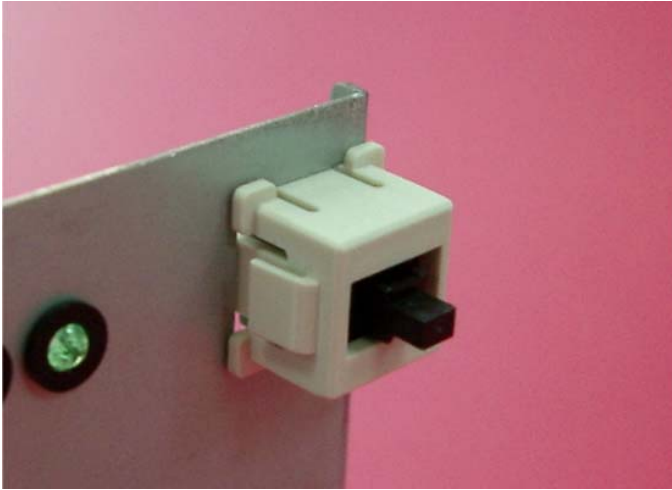
KG-C22 结构图



	PART NO	PACKAGE
	KG-C22	1000

南京诺金电气有限公司

Nanjing Nowking Electric Co., Ltd



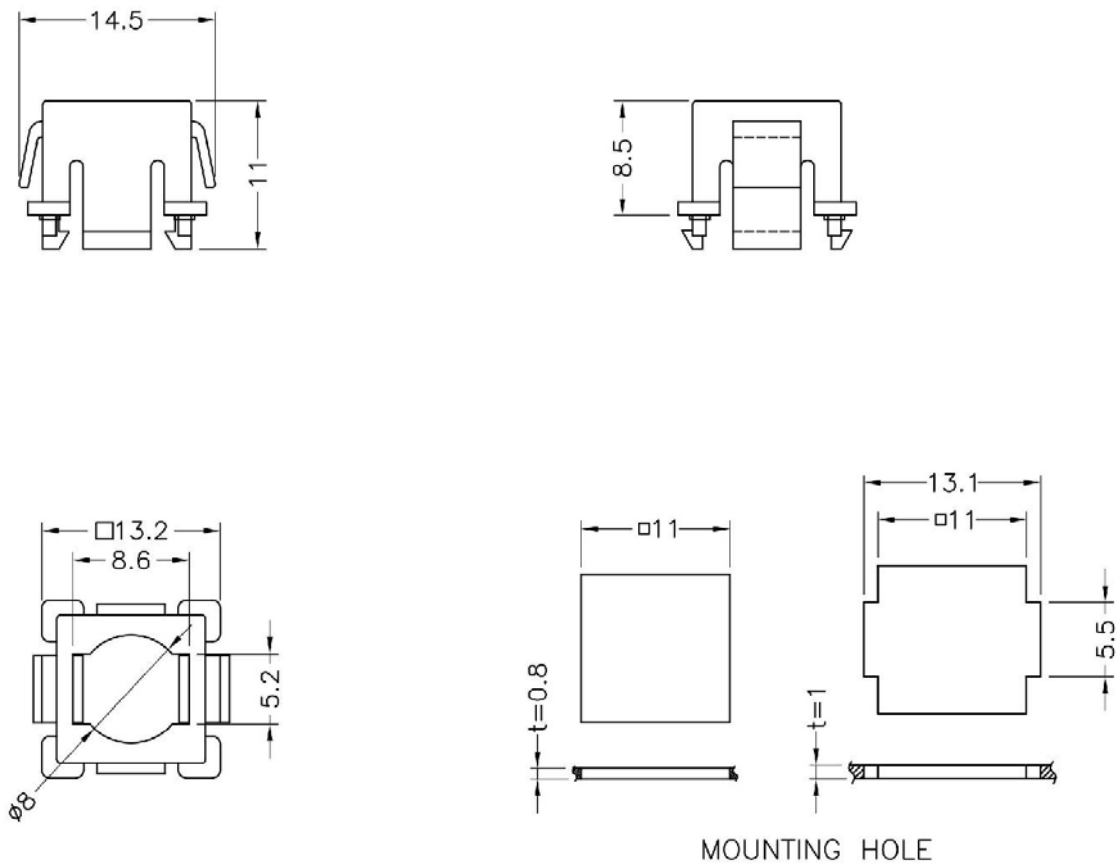
产品名称：开关盖

规格型号：KG-C23

- ◆ MATERIAL :ABS(UL)
- ◆ FLAME CLASS :94HB
- ◆ COLOR : COMPUTER,NATURAL
- ◆ UNIT: mm

用途：将 TACT 开关固定在机板上

KG-C23 结构图



PART NO

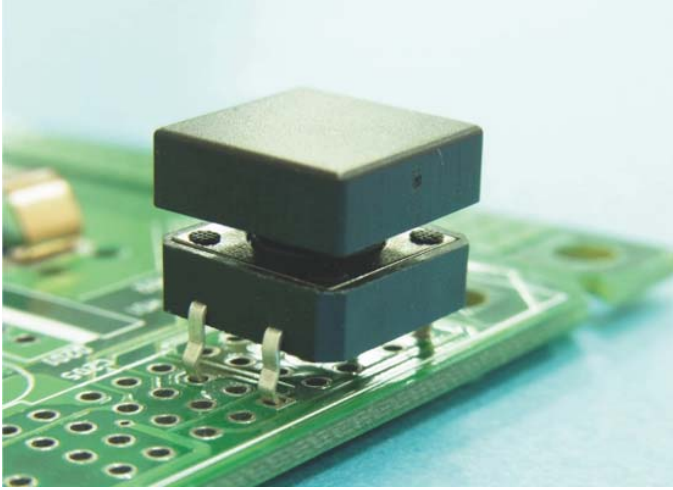
KG-C23

PACKAGE

1000

南京诺金电气有限公司

Nanjing Nowking Electric Co., Ltd



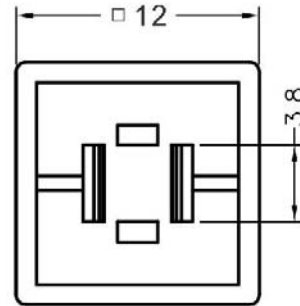
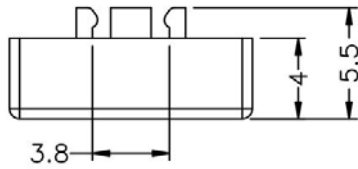
产品名称：开关盖

规格型号：KG-C24

- ◆ MATERIAL :ABS(UL)
- ◆ FLAME CLASS :94HB
- ◆ COLOR :BLACK
- ◆ UNIT: mm

用途：将 TACT 开关帽盖

KG-C24 结构图



	PART NO	PACKAGE
	KG-C24	1000

南京诺金电气有限公司

Nanjing Nowking Electric Co., Ltd



产品名称：开关盖

规格型号：KG-C25

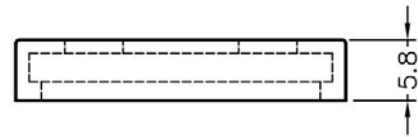
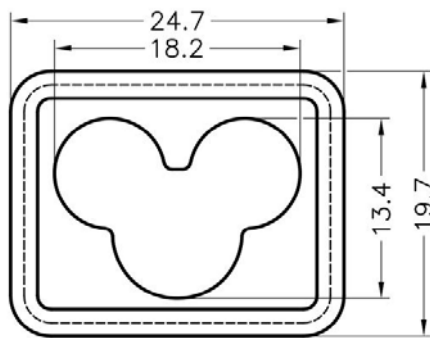
◆ MATERIAL :PVC

◆ COLOR :TRANSPARENT

◆ UNIT: mm

用途：用于电源插座防尘与保护

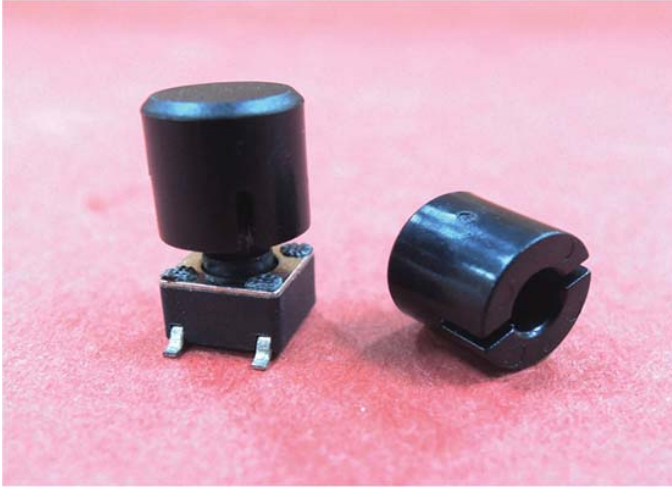
KG-C25 结构图



	PART NO	PACKAGE
	KG-C25	1000

南京诺金电气有限公司

Nanjing Nowking Electric Co., Ltd



产品名称：开关盖

规格型号：KG-C26

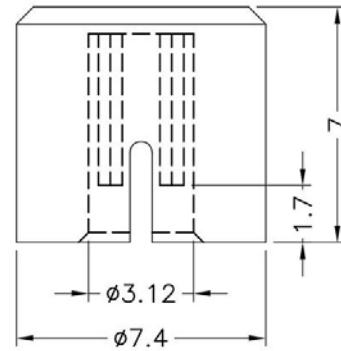
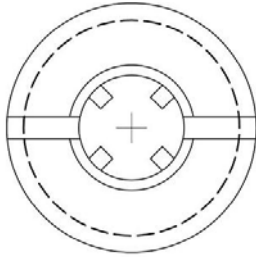
- ◆ MATERIAL :ABS(UL)
- ◆ FLAME CLASS: 94HB
- ◆ COLOR :BLACK
- ◆ UNIT: mm

用途：用于 TACT 开关固定在机板上

可使用同等材质

所有尺寸量测皆不含进胶口,胶口凸出 0.3mm 之内

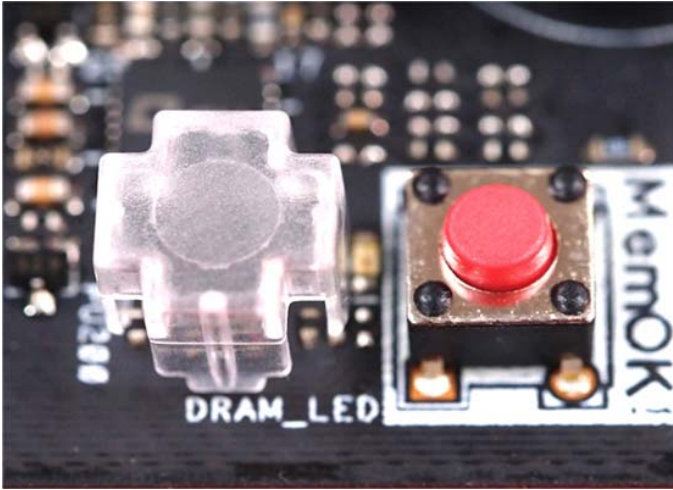
KG-C26 结构图



	PART NO	PACKAGE
	KG-C26	1000

南京诺金电气有限公司

Nanjing Nowking Electric Co., Ltd



产品名称：开关盖

规格型号：KG-C27

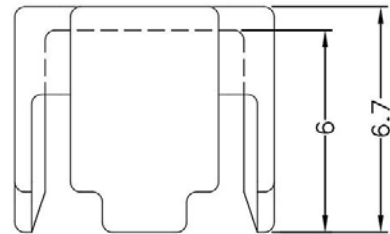
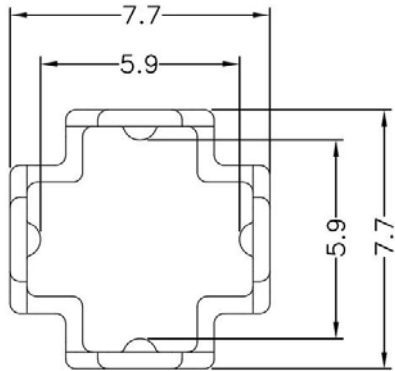
- ◆ MATERIAL :PC(UL)
- ◆ FLAME CLASS: 94-2
- ◆ COLOR :TRANSPARENT
- ◆ UNIT: mm

用途：防止 TACT 开关误触

可使用同等材质

所有尺寸量测皆不含进胶口,胶口凸出 0.3mm 之内

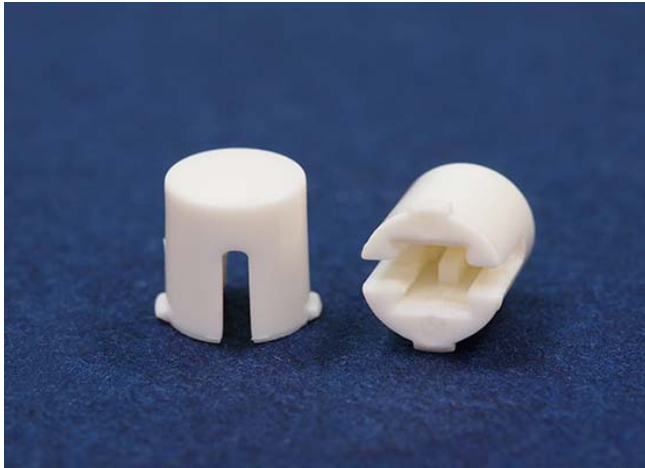
KG-C27 结构图



	PART NO	PACKAGE
	KG-C27	1000

南京诺金电气有限公司

Nanjing Nowking Electric Co., Ltd



产品名称：开关盖

规格型号：KG-C28

◆ MATERIAL :ABS

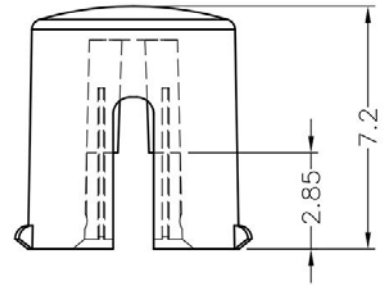
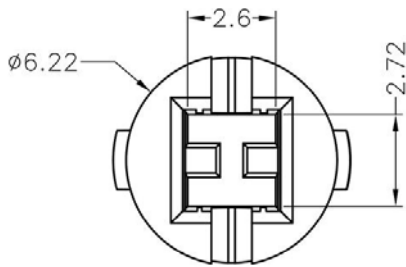
◆ COLOR :WHITE

◆ UNIT: mm

用途：将 TACT 开关固定在机板上

可使用同等材质

KG-C28 结构图



	PART NO	PACKAGE
	KG-C28	1000

